



**LOW COST SOLUTION**  
for multiple temperature  
sensor readings!

### Product Overview:

MUX Cards (Multiplexer cards) features 8 RTD (Pt100 3 wire) input channels, 2 analogue input channels (0-10V) and 1 analogue/PWM output channel. This unit may be linked on a RS-485 Modbus (RTU) network.

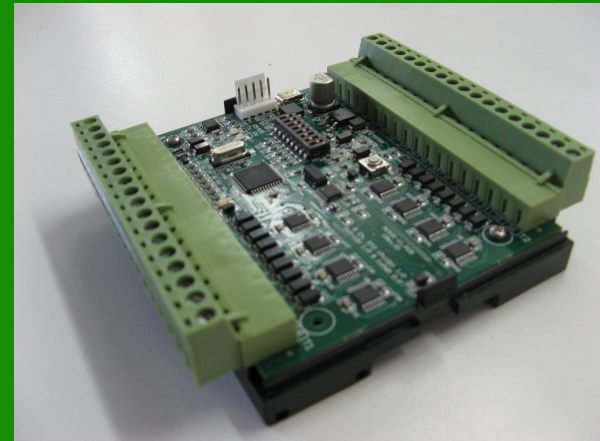
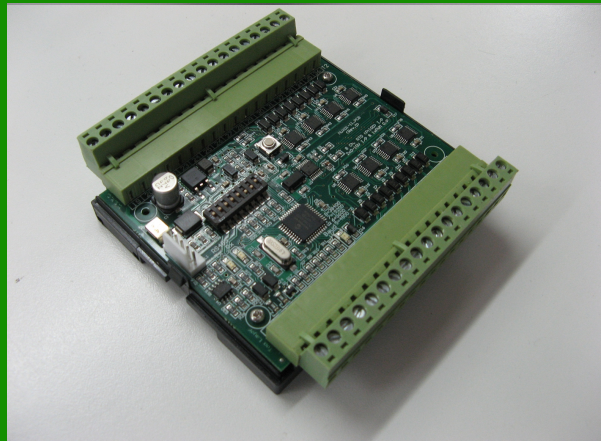
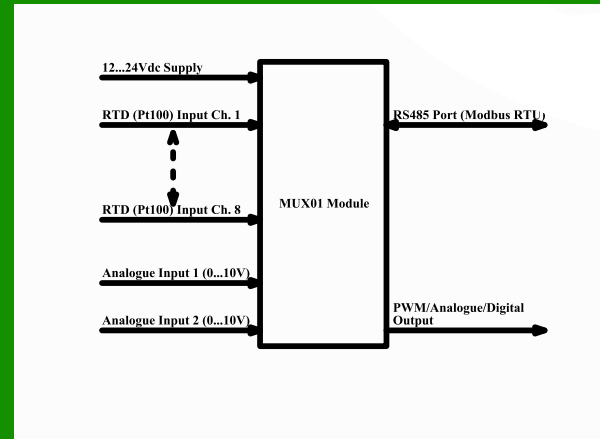
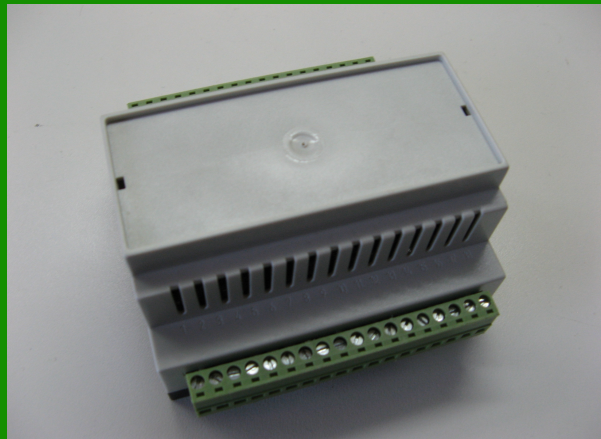
Onboard 16-bit A/D used for all 8 temperature channels.

A 12-24 DC power supply is required.

### Benefits:

- Reduced panel wiring
- Simple link up to host PC/PLC via RS-485 Industry Standard Modbus Protocol
- Daisy-chain up to 32 units
- Overall low cost solution
- Programmable baud rate

## RTD (Pt100) Multiplexer Module



### Features:

- 8 RTD (Pt100) Inputs
- Temperature in °C/°F
- RS-485 Port
- Two 0-10 Volt Inputs
- 1 PWM Output
- Low Cost Solution
- Industry Standard
- Precise Measurements
- DIN-rail Mounting

### System Integrator Information:

PO BOX 26443, Hout Bay, 7872  
South Africa  
C: +27 72 032 1500 / +27 72 292 5624  
F: +27 86 552 9160  
E: sales@futre.co.za  
[www.futre.co.za](http://www.futre.co.za)